



MODEL TCS-40 Installation Instructions

Assembly Information

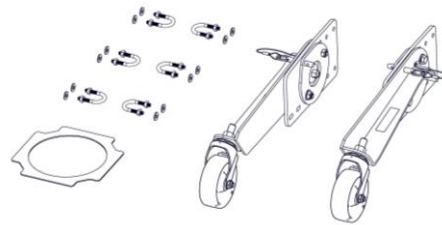
The TCS-40 is designed to aid in transporting heavy tire stacks by taking strain off the operator. In some instances, with shorter tire stacks, the cart would be easier to operate with the support arms stored away so the cart can be leaned further back.

⚠ WARNING

The TCS-40 is only intended for transport use. Do not load or unload tires from the cart while resting on the support arms. Doing so may result in the cart moving or tipping forward, potentially causing damage to the cart, surroundings, or personnel.

Included Parts

1. Support Arm – Left (1)
2. Support Arm – Right (1)
3. U-bolt with nuts (6)
4. 1/4 Washer (12)
5. Spacing Guide (1)



Installation

1. Unpack and remove kit from shipping carton. Position the Tire Cart on its side. Use a 4 x 4 block or the carton the kit came in to help support the handle of the cart (Figure 1).

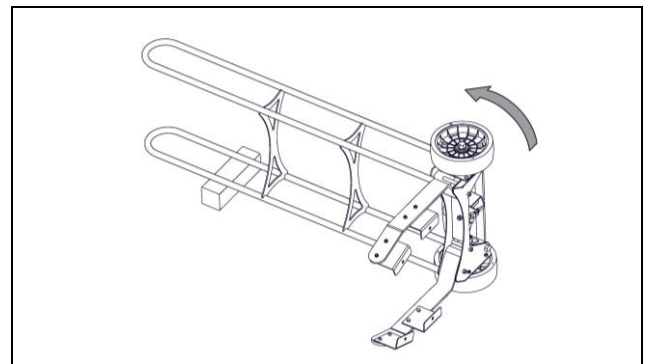


Figure 1

2. Match one side of the TCS-40 Kit with the side of the cart that is facing up, making sure the arm is in the stored position (Figure 2).

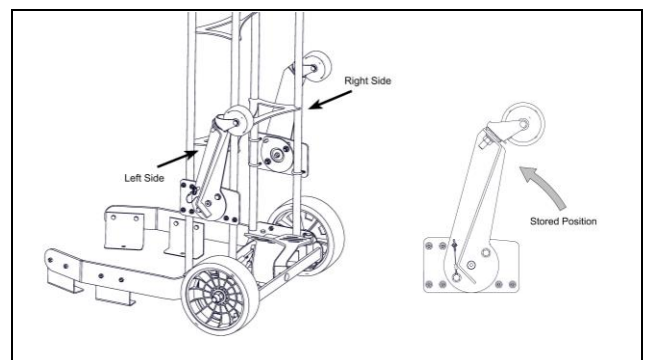


Figure 2

3. Lay the included Spacing Guide on top of the handle with one edge of the guide touching the top flange of the cart frame. Install the three U-bolts, along with the six washers and nuts supplied. Do not tighten yet. Align the bottom edge of the TCS-40 mounting plate with the other side of the guide (Figure 3). Tighten the U-bolts and double check alignment in case of movement. Adjust if necessary.

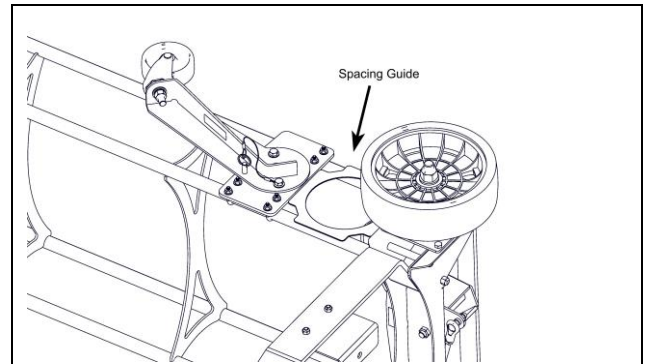



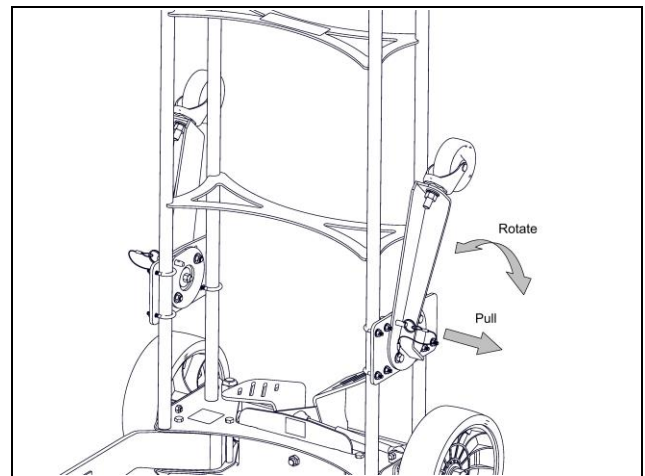
Figure 3

4. Flip the cart to the other side and repeat steps 1-3.

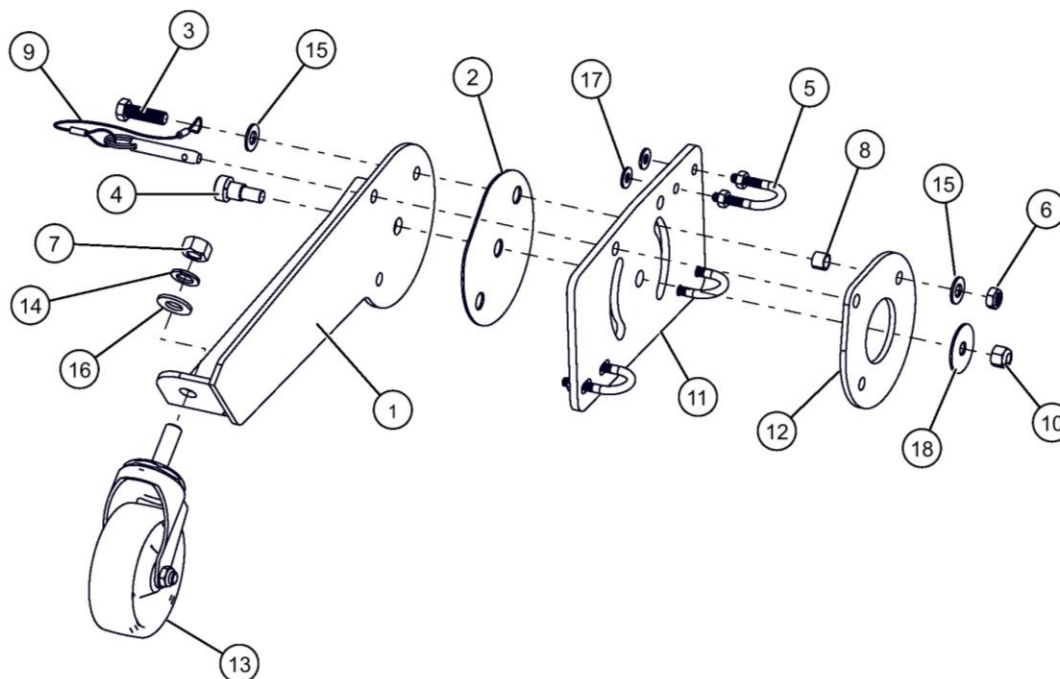
Operation

Rotating Support Arms: Pull the detent pin out to release the support arm. Pivot the arm and reinstall the pin. Make sure the pin is fully engaged when set to the stored or deployed position. Repeat for the other side.

 WARNING
Do not operate the cart with only one support arm deployed. Doing so can create an uneven load and extra stress to the deployed support arm.



REPAIR PARTS



SUPPORT ARM ASSEMBLY - LEFT SIDE

ITEM	PART NO.	DESCRIPTION
* 1	03-0705	SUPPORT ARM - LEFT
2	11-0143	WEAR PAD
3	028-046	3/8-16 X 1-1/4 SCREW
4	50-0121	1/2 X 1/2 SHOULDER SCREW
5	50-0220	U-BOLT
6	51-0070	3/8-16 JAM LOCK NUT
7	51-0082	1/2-13 NUT
8	52-0064	SPACER
9	54-0051	DETENT PIN
10	055-154	3/8-16 LOCK NUT

ITEM	PART NO.	DESCRIPTION
11	71-0549	MOUNTING PLATE
12	72-0668	BACKING PLATE
13	90-0011	SWIVEL CASTER
14	108-006	1/2 LOCK WASHER
15	108-015	3/8 WASHER
16	108-044	1/2 WASHER
17	108-110	1/4 WASHER
18	108-141	3/8 FENDER WASHER

* NOTE: Part number for SUPPORT ARM - RIGHT is 03-0704.

COMMERCIAL WARRANTY

This product is warranted by BRANICK INDUSTRIES, INC. to the original user-owner against defective materials or workmanship for a period of one year from the date of shipment. During the warranty period, at the discretion of Branick management, if the product is found to be defective, it will be repaired or replaced without charge. For service, contact Branick (800-437-4394) to obtain an RMA. Any product shipped to Branick must have an RMA and proof of original shipment date. The repaired or replacement product will be returned with transportation charges prepaid by Branick.

This warranty does not cover defects in the product caused by ordinary wear and tear, abuse, misuse, overloading, accident (including shipping damage), improper maintenance, alteration, or any other cause not the result of defective materials or workmanship.

REPAIR OR REPLACEMENT IS THE EXCLUSIVE REMEDY FOR DEFECTIVE PRODUCT UNDER THIS WARRANTY. THIS WARRANTY IS EXPRESSLY IN LIEU OF ALL OTHER WARRANTIES, INCLUDING ANY IMPLIED WARRANTY OF MERCHANT ABILITY OR ANY IMPLIED WARRANTY OF FITNESS FOR A PARTICULAR PURPOSE OF THIS PRODUCT. BRANICK INDUSTRIES, INC. SHALL NOT BE LIABLE FOR ANY CONSEQUENTIAL OR INCIDENTAL DAMAGES.

BRANICK INDUSTRIES, INC. reserves the right to make changes in the design or construction of our products without obligation to incorporate such changes in products already sold and without notice.

Service parts and regular repair service are available from authorized distributors of Branick products, or from:

BRANICK INDUSTRIES, INC.
4245 Main Ave.
 Fargo, North Dakota 58103
Toll Free: 800-437-4394



www.branick.com