



Tire Handling Equipment

Operating Instructions

Revolving Type
Truck Tire Spreader

MODEL S-FLL/ER/EF

INSTALLATION

The Branick Tire Inspector is shipped completely assembled. All that is necessary to prepare it for service is to connect an air line to the fitting at the lower left end of the machine and to wire the electrical box. It is important that the electrician wire the electrical box correctly. With the reversing switch handle pulled towards the operator, when he is in the normal operating position, the motor should rotate as indicated by the arrow on it. The normal operators position is facing the machine with the tire lift on the right hand side and the air control valves just to his right. The motor is 2 H.P., 230 volts, 3 phase, unless ordered special. The light cord should be connected to a 115 volt single phase power source.

OPERATING INSTRUCTIONS

To inspect tire, pull the reversing switch lever out, when in the normal operators position. From this position the tire will rotate clockwise. This is the normal rotation.

The rollers will not revolve until a foot pedal is depressed. Stepping on any of the three pedals, front, rear or lift end will activate the rollers.

Pull the bead hooks up and away from the center of the machine. With the lift on the floor, roll the tire onto the lift cradle. Actuate the tire lift air valve (LOWER VALVE OF CLUSTER) and raise the tire onto the machine between the traction rollers.

Place the bead hooks between the tire beads using the handles provided. If the beads are very close together, drop in one bead hook and carefully tip the tire to open the beads. This will allow room for the other bead hook.

Place the light inside of the tire. The light is fully adjustable and can rotate to view any portion of the tire.

With the bead hooks engaged and the light inside of the tire, press on a foot pedal to rotate the tire. Spread the tire to desired width by operating the spread air valve (TOP VALVE OF CLUSTER). The tire can be stopped in any position by releasing the foot pedal. To reverse tire rotation: **WARNING:** The inspector rotation should only be reversed in order to return to a position that has rotated by. Extended reverse rotation will cause the tire to shift to one roller and collapse.

1. Remove your foot from the pedal
2. Wait until the tire stops rotating
3. Move the reversing switch lever to the opposite position
4. Step on the foot pedal.

CAUTION—After the tire has been inspected:

1. Stop tire rotation by releasing foot pedal
2. Release spread cylinder completely

3. Remove bead hooks from tire
4. Roll tire onto lift cradle and lower to floor

ADJUSTING SPREAD HOOKS

There are three spread arm height positions. Most tires can be inspected with spread arms in one position on the power arms. The spread arms are held in position with spring loaded lock pins. To release the pins, place hands under horizontal bar and with the thumb release the lock and slide the spread arm assembly up or down. The locks will pop into the new position when centered on the hole.

If the tire is lifted off of the traction rollers when the tire is spread, the arms should be lowered to the next position.

NOTE - RADIAL TIRES

When inspecting some radial tires, the tire may shift to the right and collapse. To prevent this the tire lift can be locked into position to hold the tire centered on the traction rollers.

There are two methods of locking the tire lift into position.

1. At the time the tire is lifted onto the machine, the operator can push the tire forward enough to latch the two locks which are on each side of the lift cradle. Once the locks are secured, the tire can be inspected in the normal manner.

2. If the tire is already on the machine with the bead hooks in position, the operator can lower the lift slightly, raise the lift cradle by hand and secure the locks. When the locks are secure, the lift can be brought up against the tire to hold it centered on traction rollers.

CAUTION — THE LOCKS MUST BE RELEASED BEFORE USING THE LIFT TO LOWER THE TIRE TO THE FLOOR.

MAINTENANCE

CAUTION — DISCONNECT POWER SOURCE (AIR AND ELECTRIC) BEFORE SERVICING MACHINE.

The chain idlers are equipped with zerk fittings and should be greased every six months.

The vertical posts should be cleaned and waxed periodically to allow hook assemblies to slide easily.

Once a month pour about 1/4 cup of 10 or 20 SAE motor oil into each air cylinder. Each six months remove air cylinder cover plates and remove piston and rod. Clean cylinder thoroughly. After reassembling cylinders, add 1/4 cup of oil to spread cylinder through plug in pipe tee and to lift cylinder through plug in cover plate.



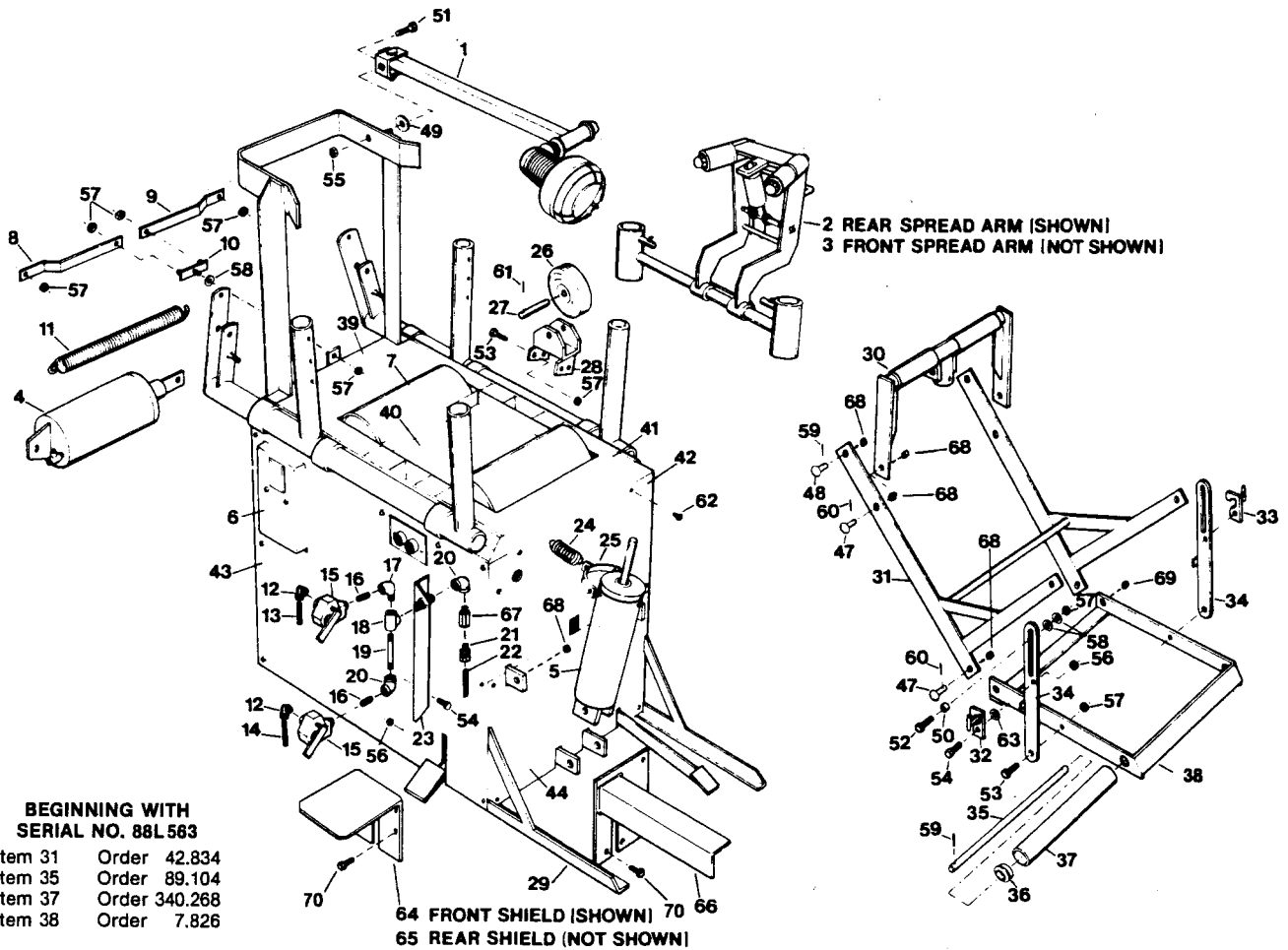
Branick

Tire Handling Equipment

Repair Parts Information

REVOLVING TYPE
TRUCK TIRE SPREADER

MODEL S-FLL/ER/EF



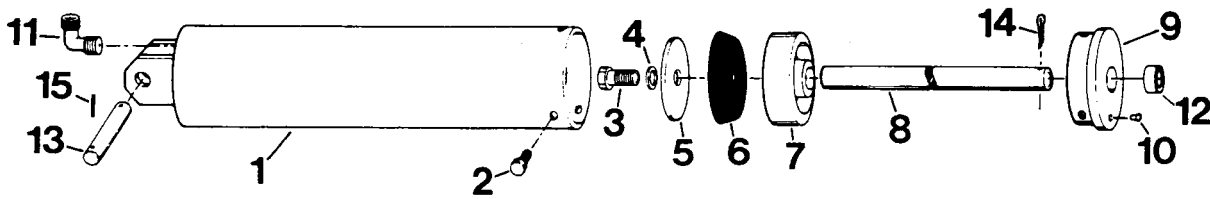
BEGINNING WITH
SERIAL NO. 88L563

Item 31 Order 42.834
Item 35 Order 89.104
Item 37 Order 340.268
Item 38 Order 7.826

64 FRONT SHIELD (SHOWN) 70 66
65 REAR SHIELD (NOT SHOWN)

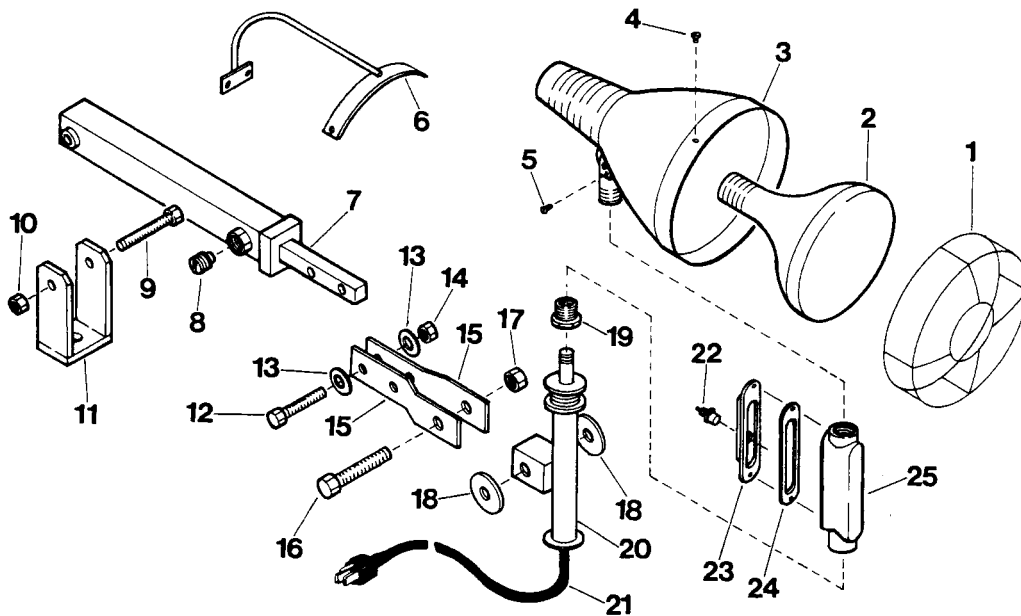
ITEM NO.	PART NO.	NO. REQ'D	DESCRIPTION	ITEM NO.	PART NO.	NO. REQ'D	DESCRIPTION
1	1.979	1	Light Post Ass'y (see page 2)	36	16.107	2	Cradle Roller Brg.
2		1	Rear Spread Arm (see page 3)	37	292.268	1	Cradle Roller Tube
3		1	Front Spread Arm (see page 3)	38	3.826	1	Lift Cradle
4	187.900	1	Spread Cylinder (see page 3)	39	79.098	1	Top Cover L.H.
5	12.928	1	Lift Cylinder (see page 2)	40	86.098	1	Top Cover Tray
6		1	Electrical System (see pg. 4 & 5)	41	8.825	1	Top Cover R.H.
7		1	Drive Assembly (see page 5)	42	115.098	1	Upper R. H. Panel
8	553.950	1	Short Link	43	116.098	1	Front Panel
9	552.950	1	Long Link	44	81.098	1	Lower R.H. Panel
10	199.950	1	Link Pivot	45	84.098	1	L.H. Panel (not shown)
11	11.110	1	Spread Cylinder Spring	46	82.098	1	Rear Panel (not shown)
12	34.096	2	1/4 - 1/4 Male Elbow	47	28.003	4	Rivet
13	294.268	1	1/4 Nylon Tube x 60"	48	4.003	2	Rivet
14	293.268	1	1/4 Nylon Tube x 40"	49	9.108	1	Fiber Washer
15	4.190	2	No. 60 3-Way Valve	50	49.039	2	Lift Lock Bushing
16	221.096	2	1/4 Close Nipple	51	34.028	1	1/2 NC HHCS x 1 - 1/4
17	38.096	1	1/4 Street Elbow	52	329.028	2	3/8 NC HHCS x 2
18	249.096	1	1/4 Pipe Tee	53	21.028	10	3/8 NC HHCS x 1
19	46.096	1	1/4 x 4 Nipple	54	14.028	4	5/16 NC HHCS x 1
20	215.096	2	1/4 Pipe Elbow	55	58.055	1	5/16 NC Hex Lock Nut
21	11.096	2	1/4 - 1/4 Male Connector	56	23.055	4	1/2 NC Hex Lock Nut
22	295.268	1	1/4 Nylon Tube x 62"	57	210.055	17	3/8 NC Hex Lock Nut
23	12.878	1	Valve Bracket	58	15.108	4	3/8 Flat Washer
24	5.846	1	Lift Cyl. Link	59	6.061	4	1/8 x 1 - 1/4 Drive pin
25	14.878	1	Spring Bracket	60	9.061	4	5/32 x 1 Drive Pin
26	1.106	2	5" Wheel	61	5.061	4	1/8 x 1 Drive Pin
27	83.104	2	Side Roller Shaft	62	148.028	38	1/4 Self Tapping Screw
28	10.878	2	Side Roller Brkt.	63	157.108	2	Spring Washer
29	28.834	1	Basic Frame	64	46.298	1	Foot Switch Shield Front
30	4.874	1	Lift Yoke	65	47.298	1	Foot Switch Shield Rear
31	27.834	1	Lift Frame	66	45.298	1	Foot Switch Shield R.H.
32	1.843	1	Front Cradle Catch	67	1.932	1	Filter Screen Ass'y.
33	2.843	1	Rear Cradle Latch	68	62.039	10	Bushing
34	4.846	2	Lift Cradle Link	69	65.039	2	Bushing
35	81.104	1	Cradle Roller Shaft	70	182.028	9	Self Tapping Screw

REPAIR PARTS LIST FOR MODEL S-FLL/ER/EF



LIFT CYLINDER ASSEMBLY ND 12.928

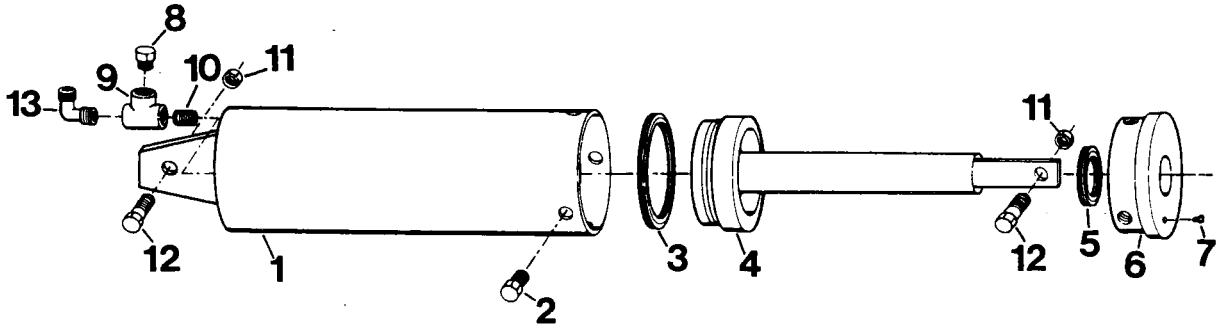
ITEM NO.	PART NO.	NO. REQ'D	DESCRIPTION	ITEM NO.	PART NO.	NO. REQ'D	DESCRIPTION
1	3.828	1	Lift Cylinder Weldment	10	4.006	1	1/8 Tapered Caplug
2	2.028	3	5/16 NC x 5/8 H.H.C.S.	11	157.096	1	Lift Cylinder Fitting
3	239.028	1	9/16 NC x 1 1/4 H.H.C.S.	12	43.039	1	Bushing
4	240.167	1	14 Mil Gasket	ASSOCIATED ITEMS NOT INCLUDED IN ASSEMBLY 12.928			
5	32.108	1	Cup Washer	13	154.061	1	Lift Cylinder Pin
6	15.041	1	Piston Cup	14	15.061	1	5/32 x 2 Cotter Pin
7	23.051	1	3 1/2" Dia. Piston	15	5.061	2	1/8 Dia. x 1 Drive Pin
8	198.149	1	Piston Rod				
9	114.098	1	Cover Plate				



LIGHT POST ASS'Y (1.979)

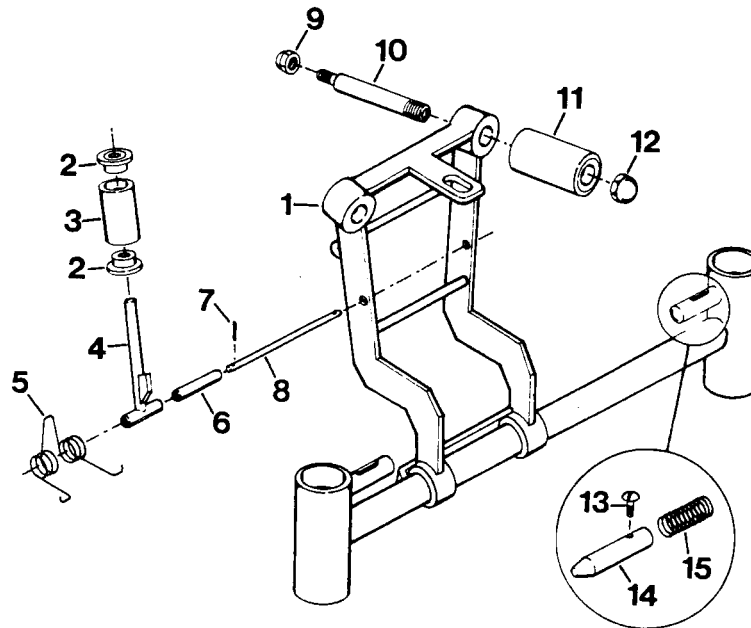
ITEM NO.	PART NO.	NO. REQ'D	DESCRIPTION	ITEM NO.	PART NO.	NO. REQ'D	DESCRIPTION
1	9.376	1	Lamp Guard	14	23.055	2	5/16 NC Hex Lock Nut
2	6.376	1	Spot Lamp	15	376.111	2	Bracket
3	10.376	1	Lamp Holder	16	44.028	1	7/16 NC x 2 HHCS
4	219.028	4	Machine Screw	17	21.055	1	7/16 NC Hex Lock Nut
5	188.028	1	Pan Head Screw	18	9.108	2	Fiber Washer
6	6.837	1	Light Guard Handle	19	40.096	1	Pipe Bushing
7	10.879	1	Light Post	20	5.856	1	Pivot
8	2.040	1	Spring Plunger	21	25.980	1	Cord
9	33.028	1	3/8 NC x 2 1/4 HHCS	22	129.980	1	Switch
10	210.055	1	3/8 NC Hex Lock Nut	23	131.980	1	Cover
11	13.878	1	Bracket	24	10.167	1	Gasket
12	121.028	2	5/16 NC x 1 1/2 HHCS	25	130.980	1	Conduit Body
13	25.108	4	Washer				

REPAIR PARTS LIST FOR MODEL S-FLL/ER/EF



SPREAD CYLINDER ASSEMBLY ND 187.900

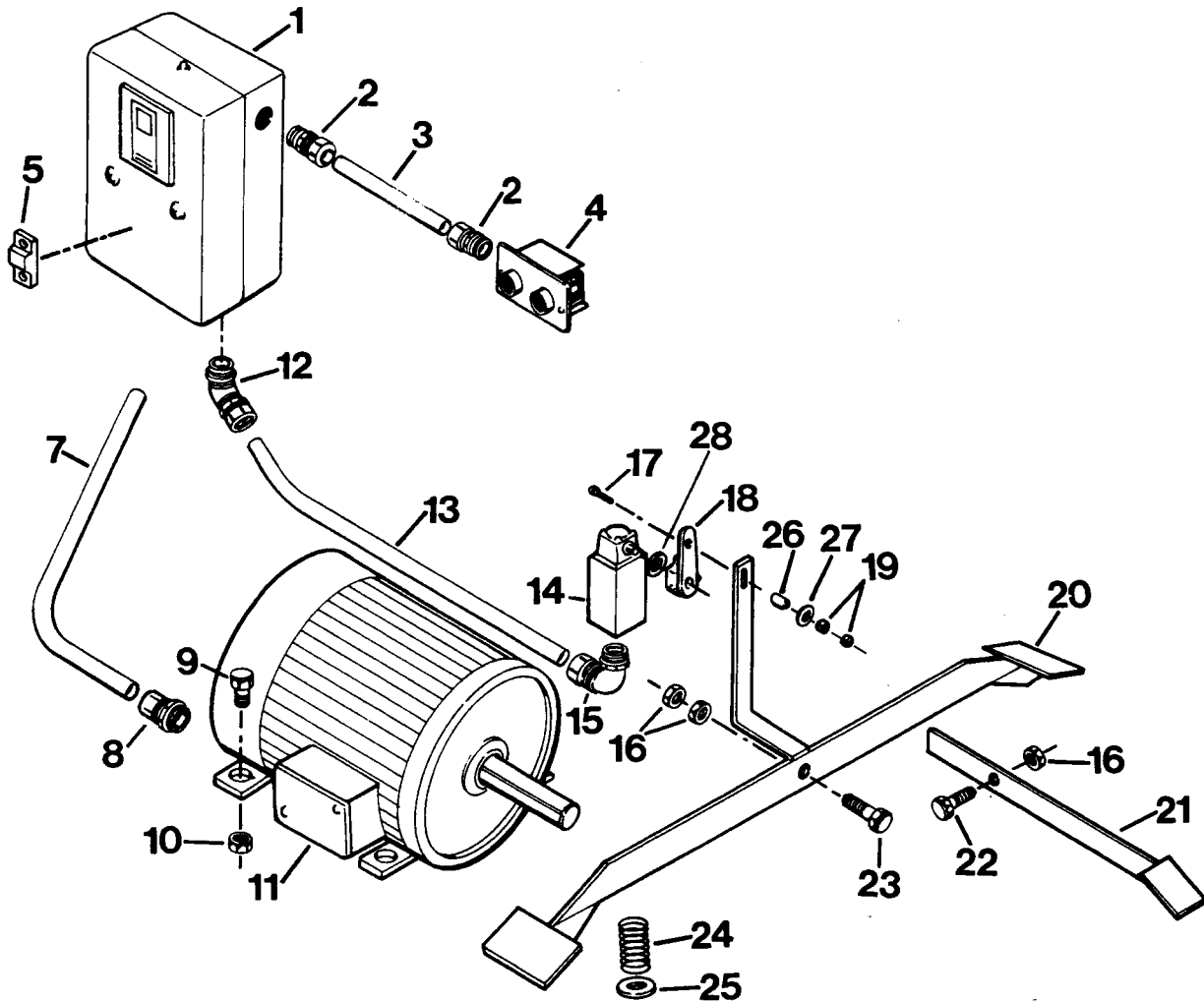
ITEM NO.	PART NO.	NO. REQ'D	DESCRIPTION	ITEM NO.	PART NO.	NO. REQ'D	DESCRIPTION
1	194.950	1	Cylinder	ASSOCIATED ITEMS NOT INCLUDED IN ASS'Y 187.900			
2	5.028	4	7/16 NC HHCS x 3/4	8	1.006	1	1/4 Oil Plug
3	204.041	1	Block Vee-Seal 4 1/2" D	9	249.096	1	1/4 Pipe Tee
4	195.950	1	Piston Rod Ass'y	10	221.096	1	1/4 Close Nipple
5	326.041	1	Rod Seal	11	58.055	1	1/2 NC Hex Lock Nut
6	327.098	1	Cover Plate	12	25.028	1	1/2 NC HHCS x 1 1/2
7	4.006	1	1/4 Caplug	13	34.096	1	1/4 - 1/4 Male Elbow



SPREAD ARM ASSEMBLY

ITEM NO.	PART NO.	NO. REQ'D	DESCRIPTION	ITEM NO.	PART NO.	NO. REQ'D	DESCRIPTION
1	16.804	1	Rear Spread Arm	8	82.104	2	Spring Holder Shaft
	15.804	1	Front Spread Arm	9	71.055	4	1/2 Hex Cap Nut
2	18.107	4	Bead Roller Bearing	10	79.104	4	Spread Roller Shaft
3	83.268	2	Bead Roller	11	13.963	4	Spread Roller
4	4.863	2	Roller Weldment	12	72.055	4	5/8 Hex Cap Nut
5	25.110	1	Bead Roller Spring	13	155.028	4	10-24 Pan HD. Screw x 5/8
6	71.446	4	Sleeve	14	153.061	4	Latch Pin
7	32.061	4	1/8 x 3/4 Drive Pin	15	18.110	4	Latch Spring

REPAIR PARTS LIST FOR MODEL S-FLL/ER/EF

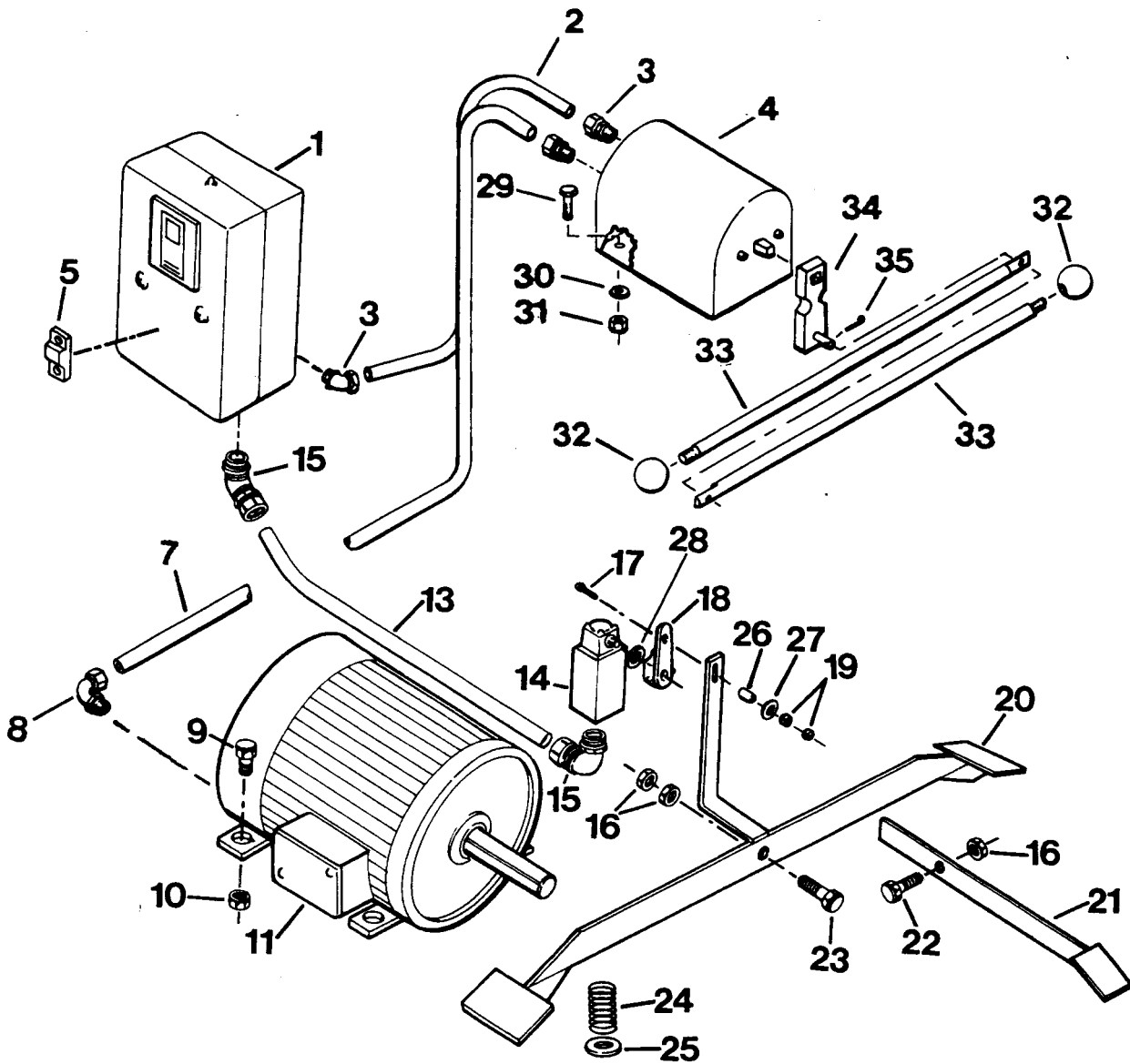


ELECTRICAL SYSTEM AND RELATED COMPONENTS

ITEM NO.	PART NO.	NO. REQ'D	DESCRIPTION	ITEM NO.	PART NO.	NO. REQ'D	DESCRIPTION
1	139.980	1	Magnetic Starter (230V)	14	62.980	1	Micro Switch
	138.980	1	Magnetic Starter (460V)	15	26.980	1	3/8 x 90° Connector
2	88.096	2	3/8 Straight Connector	16	210.055	2	3/8 NC Hex Lock Nut
3	140.980	1	3/8 Conduit x 14"	17	178.028	1	3/16 NC HHCS x 1 1/2
4	10.372	1	Stop/Start Switch	18	31.157	1	Fixed Lever
5	142.980	1	W46 Heater (230V)	19	75.055	2	3/16 NC Hex Nut
6	143.980	1	W39 Heater (460V)	20	2.851	1	Foot Switch - Double
7	33.096	2	1/2 x 45° Connector	21	1.851	1	Foot Switch - Single
8	141.980	1	1/2 Conduit x 16"	22	289.028	1	3/8 NC HHCS x 1 1/2
9	115.980	1	1/2 Straight Connector	23	39.028	1	3/8 NC HHCS x 1 3/4
10	59.028	4	5/16 NC HHCS x 1 1/4	24	73.110	2	Spring
11	23.055	4	5/16 NC Hex Lock Nut	25	2.039	2	Washer
12	2.259	1	Electric Motor	26	51.039	1	Bushing
13	84.980	1	3/8 x 45° Connector	27	24.108	1	3/16 Plain Washer
	118.980	1	3/8 Conduit x 36"	28	25.108	2	5/16 Plain Washer

REPAIR PARTS LIST FOR MODEL S-FLL/ER/EF

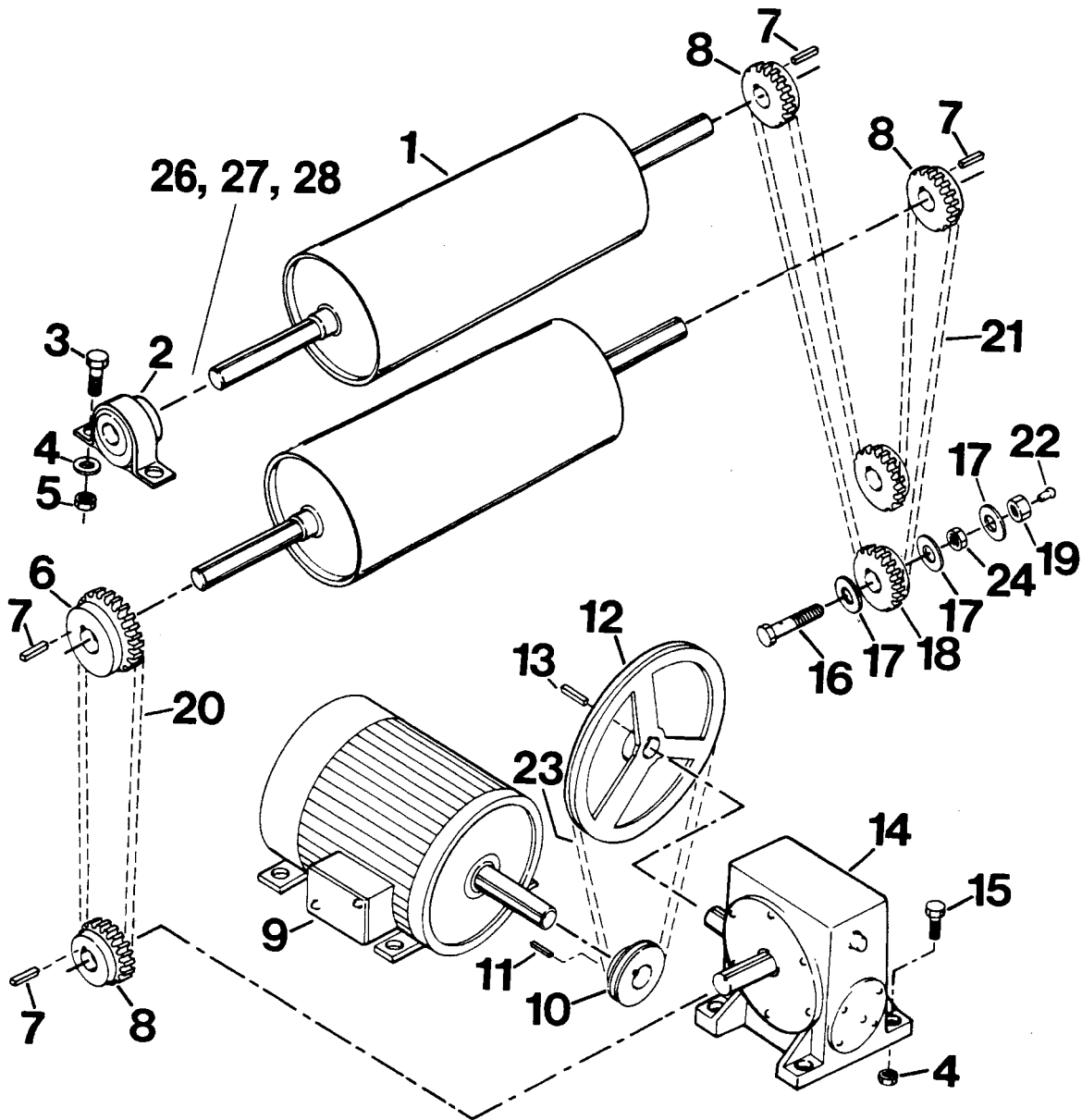
BEGINNING WITH SERIAL NO. 84F439



ELECTRICAL SYSTEM AND RELATED COMPONENTS

ITEM NO.	PART NO.	NO. REQ'D	DESCRIPTION	ITEM NO.	PART NO.	NO. REQ'D	DESCRIPTION
1	139.980	1	Magnetic Starter (230V)	18	31.157	1	Fixed Lever
	138.980	1	Magnetic Starter (460V)	19	75.055	2	Hex Nut
2	213.980	1	Conduit	20	2.851	1	Foot Switch - Double
3	115.980	3	Connector	21	1.851	1	Foot Switch - Single
4	7.372	1	Reversing Switch	22	289.028	1	Hex Cap Screw
5	142.980	1	W46 Heater (230V)	23	39.028	1	Hex Cap Screw
	143.980	1	W39 Heater (460V)	24	73.110	2	Spring
7	202.980	1	Conduit	25	2.039	2	Washer
8	205.980	1	Connector	26	51.039	1	Bushing
9	59.028	4	Hex Cap Screw	27	24.108	1	Washer
10	23.055	4	Hex Lock Nut	28	25.108	2	Washer
11	2.259	1	Electric Motor	29	10.028	2	Hex Cap Screw
13	118.980	1	Conduit	30	132.108	2	Lock Washer
14	62.980	1	Micro Switch	31	52.055	2	Hex Nut
15	83.980	2	Connector	32	6.016	2	Ball Handle
16	210.055	3	Hex Lock Nut	33	267.149	2	Rod
17	178.028	1	Hex Cap Screw	34	1.944	1	Switch Lever
				35	28.061	1	Cotter Pin

REPAIR PARTS LIST FOR MODEL S-FLL/ER/EF



DRIVE ASSEMBLY

ITEM NO.	PART NO.	NO. REQ'D	DESCRIPTION	ITEM NO.	PART NO.	NO. REQ'D	DESCRIPTION
1	3.863	2	Traction Roller w/ Abrasive Sleeve	15	289.028	4	3/8 NC HHCS x 1/2
**2	20.107	4	Pillow Block	16	10.242	2	Drilled Capscrew
3	21.028	8	3/8 NC HHCS x 1	17	50.039	4	1/2 Machine Bushing
4	15.108	8	3/8 Flat Washer	18	1.966	2	14 Tooth Sprocket
5	210.055	8	3/8 NC Hex Lock Nut	19	58.055	2	1/2 NC Hex Lock Nut
6	42.228	1	20 Tooth Sprocket	20	28.066	1	Drive Chain
7	26.251	4	1/4 x 1/4 x 1 1/4 Key	21	29.066	1	Idler Chain
8	4.228	3	15 Tooth Sprocket	22	8.096	2	1/4 Zerk
9	See Page 4	1	Electric Motor	23	15.014	1	V-Belt*
10	26.019	1	3 1/4" Dia. Pulley	24	220.055	2	1/2 NC Hex Jam Nut
11	20.251	1	3/16 x 3/16 x 1 Key	25	77.446	2	Abrasive Sleeve
12	9.019	1	9" Dia. Pulley	26	7.039	4	Machine Bushing
13	27.251	1	3/16 x 3/16 x 1 3/8 Key	27	37.489	4	Collar
14	5.032	1	15:1 Gear Box	28	49.028	8	Socket HD. Set Screw

* 16.014 beginning with Serial No. 79 H 175
 ** 70.107 beginning with Serial No. 82K334

COMMERCIAL WARRANTY

This equipment is warranted by BRANICK INDUSTRIES, INC. to the original commercial user-owner against defective materials or workmanship for a period of one year from the date of delivery, except for Models BTJ, EL-200, EL-250, EL-500, ALJ, PHJ, BCL, TTC, DWL, FTB-A/H, FTB-H, FTB-M, EMB-10, EMB-10/PP, TD, and RSL, which are warranted for ninety (90) days. During the warranty period, equipment found to be defective will be repaired or replaced (at the warrantor's option) without charge. The equipment must be returned, transportation charges prepaid, with proof of delivery date to BRANICK INDUSTRIES, INC., Fargo, North Dakota 58102. The repaired or replaced equipment will be returned with transportation charges prepaid by Branick.

This warranty does not cover defects in the equipment caused by ordinary wear and tear, abuse, misuse, overloading, accident (including shipping damage), improper maintenance, alteration, use of improper fluids, or any other cause not the result of defective materials or workmanship.

REPAIR OR REPLACEMENT IS THE EXCLUSIVE REMEDY FOR DEFECTIVE EQUIPMENT UNDER THIS WARRANTY. THIS WARRANTY IS EXPRESSLY IN LIEU OF ALL OTHER WARRANTIES, INCLUDING ANY IMPLIED WARRANTY OF MERCHANTABILITY OR ANY IMPLIED WARRANTY OF FITNESS FOR A PARTICULAR PURPOSE ON THIS EQUIPMENT. BRANICK INDUSTRIES, INC. SHALL NOT BE LIABLE FOR ANY CONSEQUENTIAL OR INCIDENTAL DAMAGES FOR BREACH OF ANY EXPRESS OR IMPLIED WARRANTY ON THIS EQUIPMENT.

WHEN THE QUESTION OF WARRANTY CLAIMS ARISE, CONTACT BRANICK FACTORY AT FARGO, NORTH DAKOTA.

Service parts, warranty, and regular repair service for products are available from Branick.

Should you require assistance, please contact:

BRANICK INDUSTRIES, INC.
2600-3rd Avenue North
Box 1937
Fargo, North Dakota 58107
701-235-4446 TLX 29-2223

BRANICK INDUSTRIES, INC.
2600-3rd Avenue North
Box 1937
Fargo, North Dakota 58107
701-235-4446 TLX 29-2223

FIS-188-1077-1
(Rev. 6-84)

Branick®

Printed in U.S.A.